

MILL RIVER PARK PLAYGROUND PLANTING

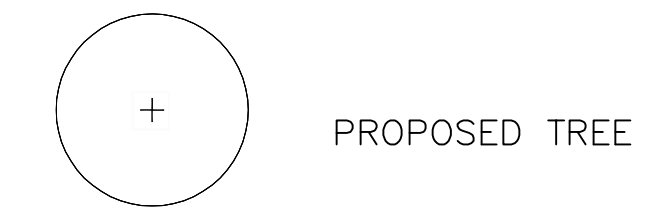
Consultants:

Landscape Architect:  
**Olin Partnership**  
 The Public Ledger Building  
 Suite 1123  
 150 South Independence Mall West  
 Philadelphia, PA 19106

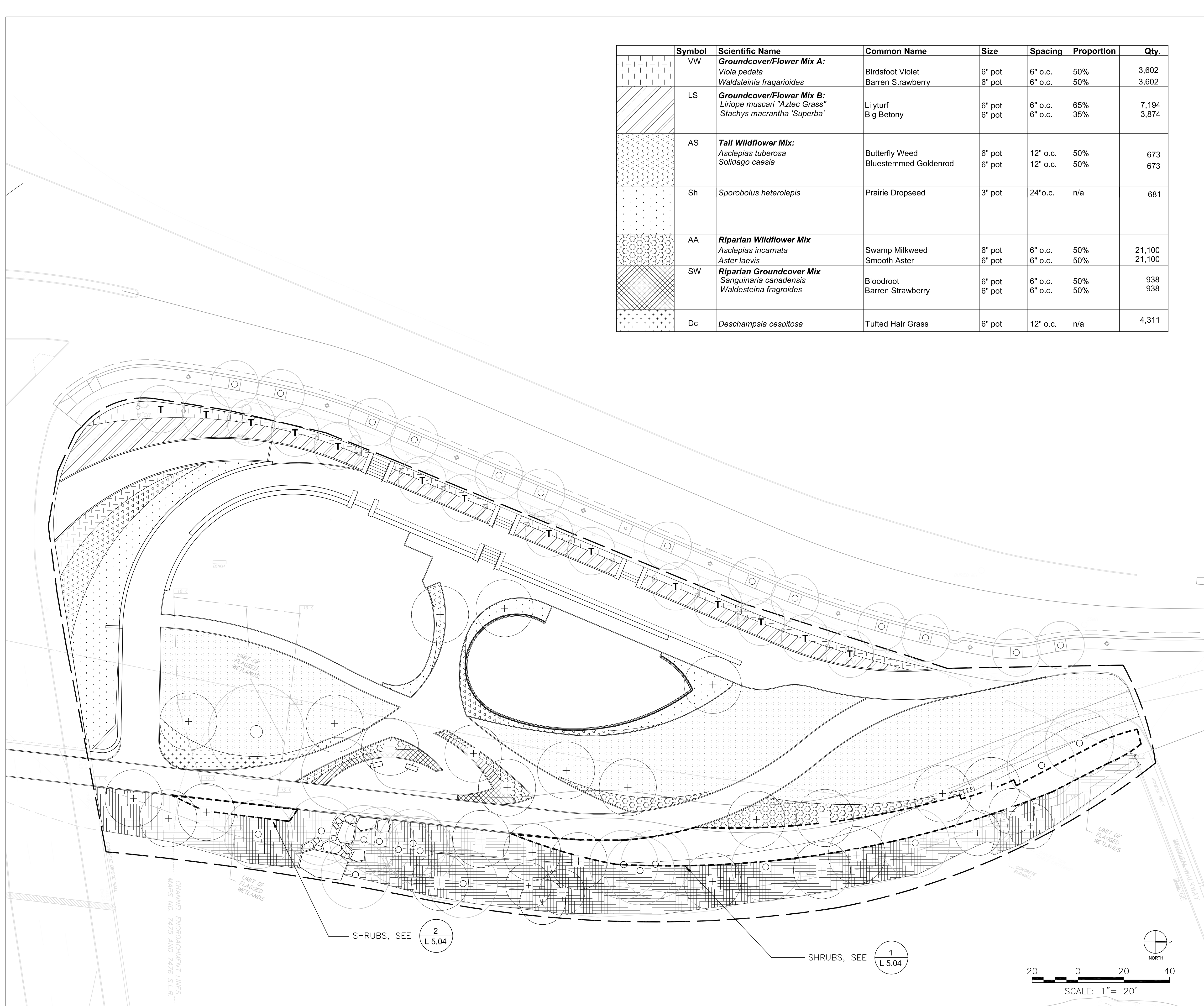
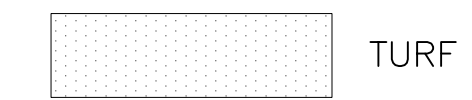
Civil Engineering/Stormwater Management:  
**Nitsch Engineering, Inc.**  
 186 Lincoln Street  
 Suite 200  
 Boston, MA 02111-2403

Symbol	Scientific Name	Common Name	Size	Spacing	Proportion	Qty.
VW	<b>Groundcover/Flower Mix A:</b> <i>Viola pedata</i> <i>Waldsteinia fragarioides</i>	Birdsfoot Violet	6" pot	6" o.c.	50%	3,602
		Barren Strawberry	6" pot	6" o.c.	50%	3,602
LS	<b>Groundcover/Flower Mix B:</b> <i>Liriope muscari</i> "Aztec Grass" <i>Stachys macrantha</i> 'Superba'	Lilyturf	6" pot	6" o.c.	65%	7,194
		Big Betony	6" pot	6" o.c.	35%	3,874
AS	<b>Tall Wildflower Mix:</b> <i>Asclepias tuberosa</i> <i>Solidago caesia</i>	Butterfly Weed	6" pot	12" o.c.	50%	673
		Bluestemmed Goldenrod	6" pot	12" o.c.	50%	673
Sh	<i>Sporobolus heterolepis</i>	Prairie Dropseed	3" pot	24" o.c.	n/a	681
AA	<b>Riparian Wildflower Mix</b> <i>Asclepias incarnata</i> <i>Aster laevis</i>	Swamp Milkweed	6" pot	6" o.c.	50%	21,100
		Smooth Aster	6" pot	6" o.c.	50%	21,100
SW	<b>Riparian Groundcover Mix</b> <i>Sanguinaria canadensis</i> <i>Waldsteinia fragarioides</i>	Bloodroot	6" pot	6" o.c.	50%	938
		Barren Strawberry	6" pot	6" o.c.	50%	938
Dc	<i>Deschampsia cespitosa</i>	Tufted Hair Grass	6" pot	12" o.c.	n/a	4,311

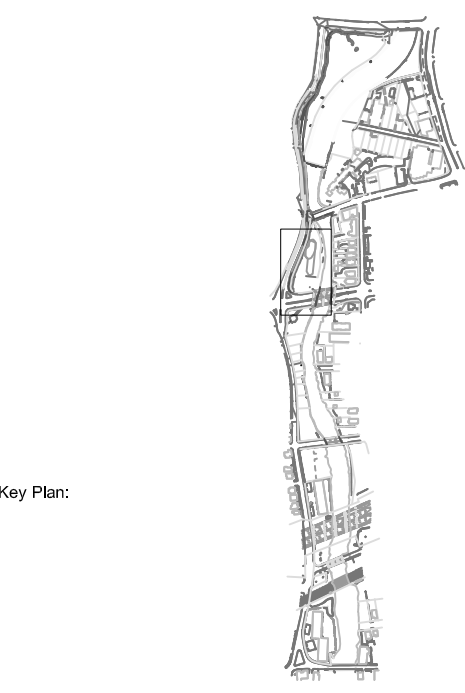
LEGEND:



WOODLAND MANAGEMENT: LONG TERM INVASIVE REMOVALS, GENERAL CLEANUP, SEEDING AND EROSION CONTROL REFER TO SPECIFICATIONS



Notes:



PLANTING PLAN HERBACEOUS

Revisions: (Addenda No.)

No.	Date	Description
1	3/28/07	100% CD

Scale: 1" = 20' Sheet No.:  
 Date: 3/28/07  
 Drawn By: C.B., J.F.  
 Checked By: C.S.  
 Project No.: 0506.09